

# SOCIAL CHANGE AND FACTORS

Dr. Soorya Gopi  
Lecturer  
Dept of Sociology  
S H College  
June 2019

# RELIGIOUS FACTORS

## TWO PERSPECTIVES

- 1) RELIGION **PREVENTS** SOCIAL CHANGE

By functionalists and Marxists

- 2) RELIGION **PROMOTES** SOCIAL CHANGE

by neo Marxism

# RELIGION **PREVENTS** SOCIAL CHANGE

## KARL MARX

- RELIGION PREVENTS ANY CHANGE IN SOCIAL SYSTEM
- RELIGION PRESERVES EXISTING CLASS STRUCTURE
- RELIGION JUSTIFIES UNEQUAL SOCIAL ORDER

**“GOD DECIDES EVERYTHING”**

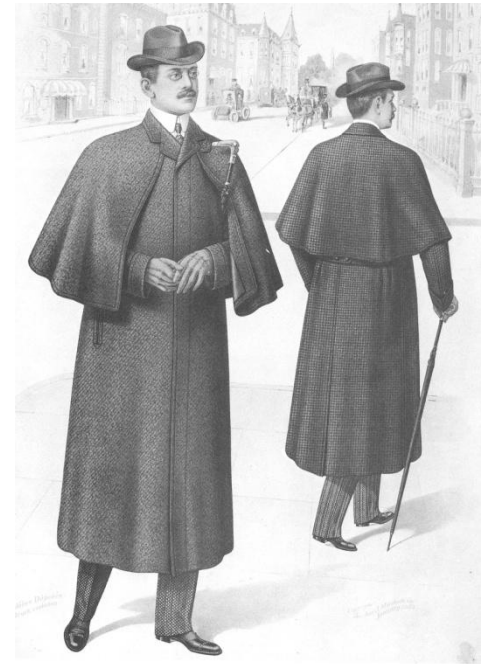
**“GET REWARDS IN HEAVEN”**



# RELIGION **PROMOTES** SOCIAL CHANGE

## MAX WEBER

- **BOOK- PROTESTANT ETHICS AND SPIRIT OF CAPITALISM**
- **EXPLAINS – RELIGION CAN BRING SOCIAL CHANGE**
- **PROTESTANT ( GROUP IN CHRISTIANITY) FOCUS IN PRE-DESTINATION**
- **INDIVIDUAL SELF FOR SALVATION**
- **HARDWORK- PROFIT-CAPITALISTS**
- **SOME PEOPLE FELL OFF-POORER- TWO CLASSES FORMED.**



# NEO MARXIST- OTTO ADURO

- EXAMPLES FOR BOTH THE CASES
- EXAMPLE OF LATIN AMERICA (TILL 1950-S)
- CATHOLIC CHURCH- SUPREMACY- SUPPORTED ELITES
- WHITE MEN + CHURCH (RELIGION) JUSTIFIED SOCIAL CLASS
- SOCIAL INEQUALITY PERSISTED
- HERE, RELIGION PREVENTS SOCIAL CHANGE

## **LATIN AMERICA AFTER 1950-S**

- **RACIAL SEGREGATION WAS THROWN AWAY**
- **CIVIL RIGHTS MOVEMENT STARTED**
- **MARTIN LUTHER KING WAS THE LEADER**
- **‘PEACEFUL PROTEST’**
- **CONCEPT OF BLACK CHURCH CAME UP**
- **TILL THEN ‘JIM CROW’ LAW PREVAILED.**
- **BLACK PEOPLE WERE NOT ALLOWED TO  
HAVE A SOCIAL LIFE**

# THE JIM CROW REPRESENTATION



**MARTIN LUTHER KING**

**BLACK CHURCH**

THE PLACE WHERE  
BLACK PEOPLE  
FOLLOW RELIGIOUS  
PRACTICES WITH AN  
AWARENESS OF  
POVERTY,  
GANG-VIOLENCE,  
HEALTH, RACISM ETC

**LIBERATION**

**THEOLOGY** WAS  
FORMED





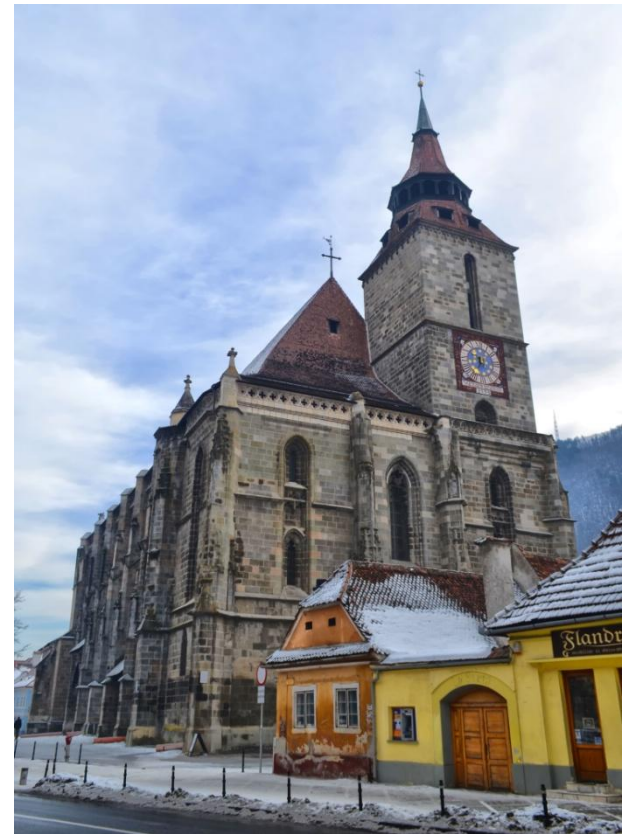
# THE BLACK CHURCH

## BASED ON CHRISTIAN THEOLOGY

- BLACK CHURCH



- SOCIAL EMPOWERMENT
- SPIRITUAL EMPOWERMENT
- AWARENESS
- BETTER LIVING CONDITIONS
- AGAINST SOCIAL INEQUALITY



# RELIGIOUS CHANGE= SOCIAL CHANGE

## LATIN AMERICA

- THEORY OF LIBERATION
- CONSTITUTION AND LAWS WERE AMENDED
- INEQUALITY WAS ERASED

## KERALA

- SREE NARAYANA GURU
- EMPOWERED PEOPLE WITH THE ONENESS OF ALL RELIGION
- THROUGH CLASSES, STORIES, SOCIAL ACTIVITIES
- UPLIFTED LOWER CASTE PEOPLE TO EMPOWERMENT

# OVER IMPACT OF RELIGION=NEGATIVE SOCIAL CHANGE

- On 6 December 1992, a large group of Hindu activists of the Vishva Hindu Parishad and allied organisations demolished the 16th-century Babri Mosque in the city of Ayodhya, in Uttar Pradesh. The demolition occurred after a political rally organised by Hindu nationalist organisations at the site turned violent.

# OVER IMPACT OF RELIGION=NEGATIVE SOCIAL CHANGE

- The Godhra Train Burning was an incident that occurred on the morning of 27 February 2002, in which 59 people died in a fire inside the [Sabarmati Express](#) train near the [Godhra](#) railway station in the Indian state of [Gujarat](#). The victims were [Hindu](#) pilgrims who were returning from the city of [Ayodhya](#) after a religious ceremony at the disputed [Babri Masjid](#) site.