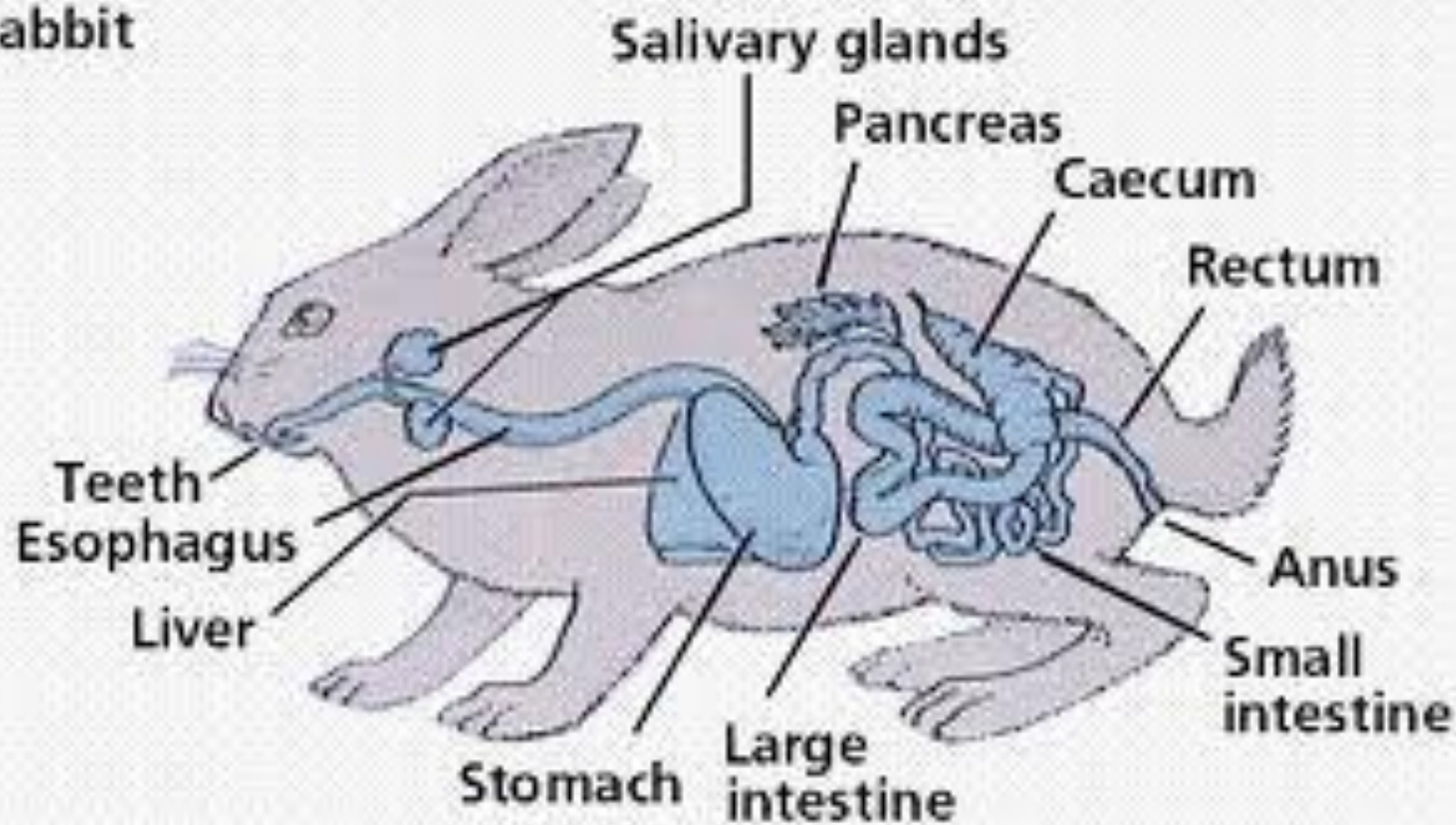
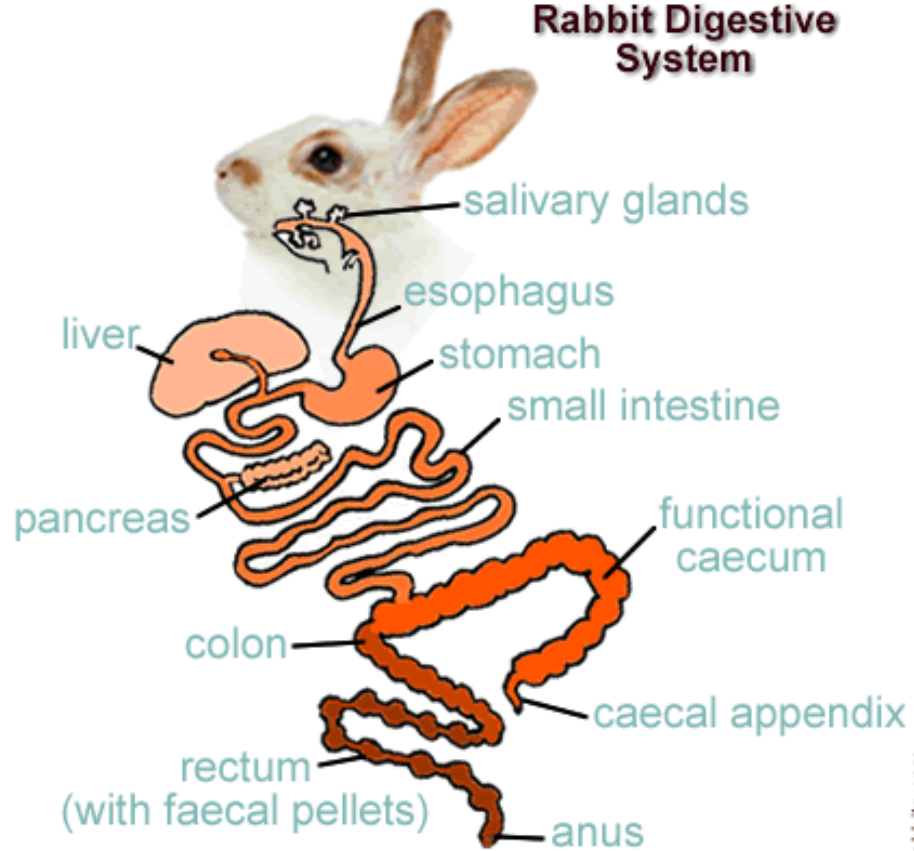


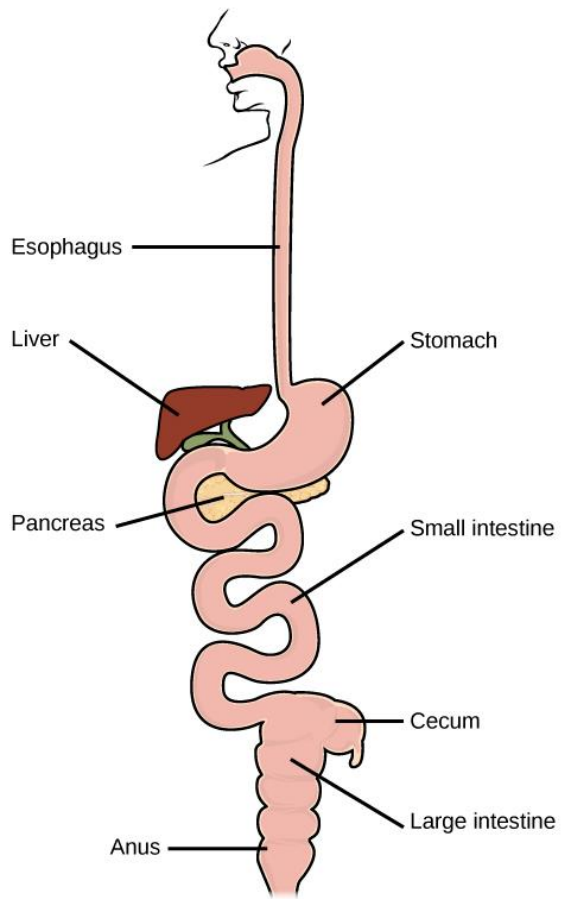
Mammal Type study- Rabbit

Rabbit

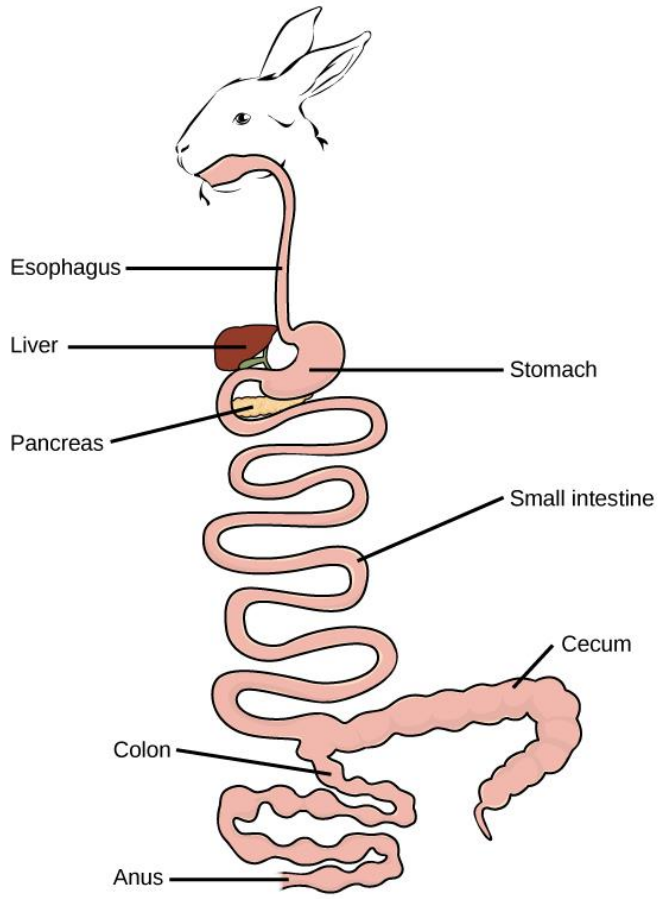


Rabbit Digestive System



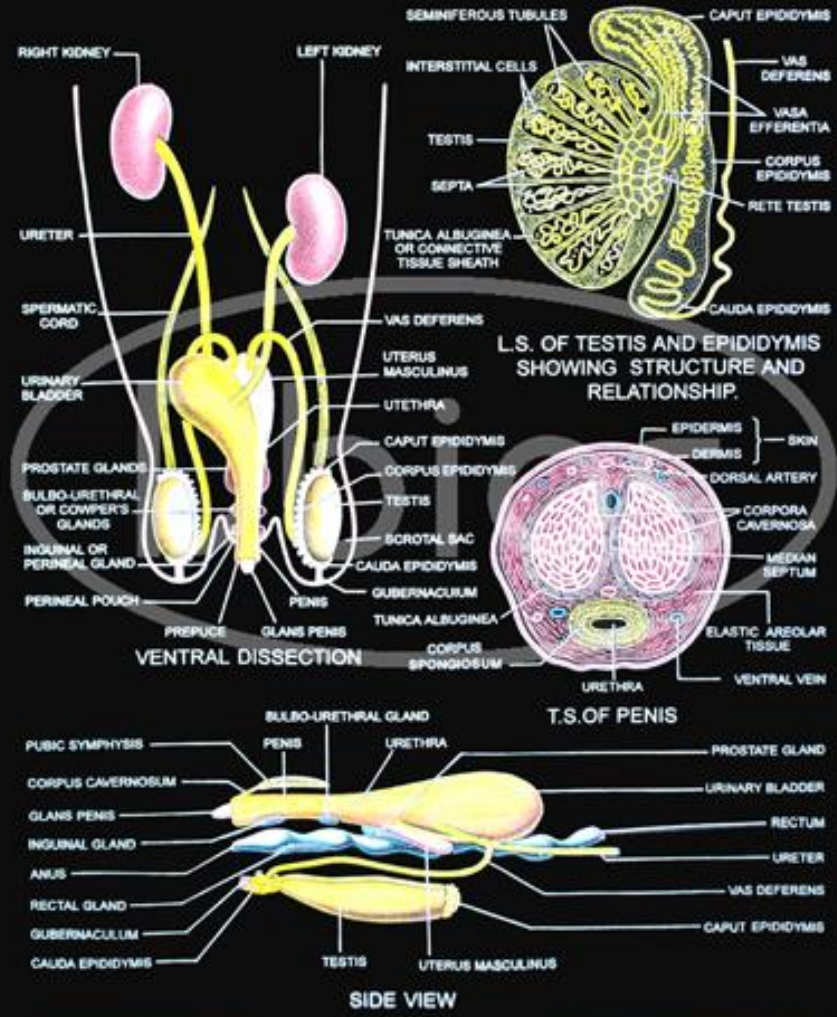


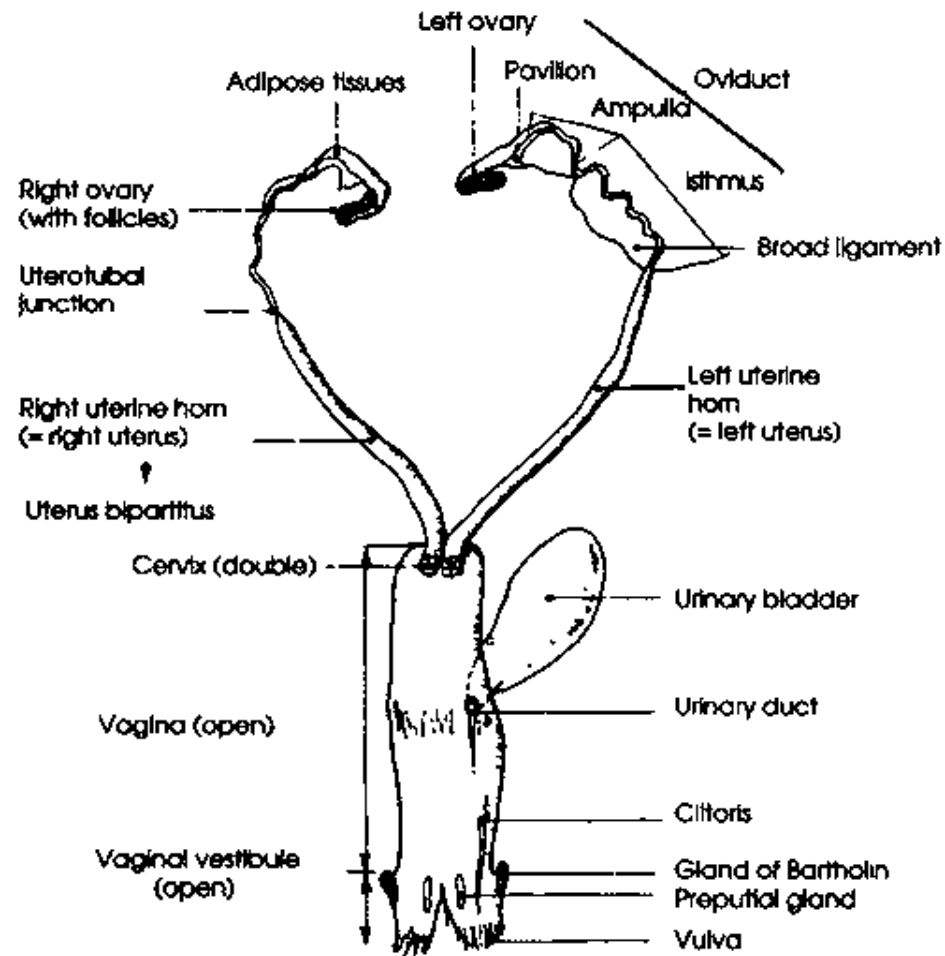
(a) Human digestive system



(b) Rabbit digestive system

RABBIT REPRODUCTIVE SYSTEM MALE

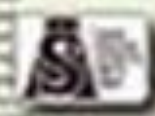




RABBIT-ARTERIAL SYSTEM

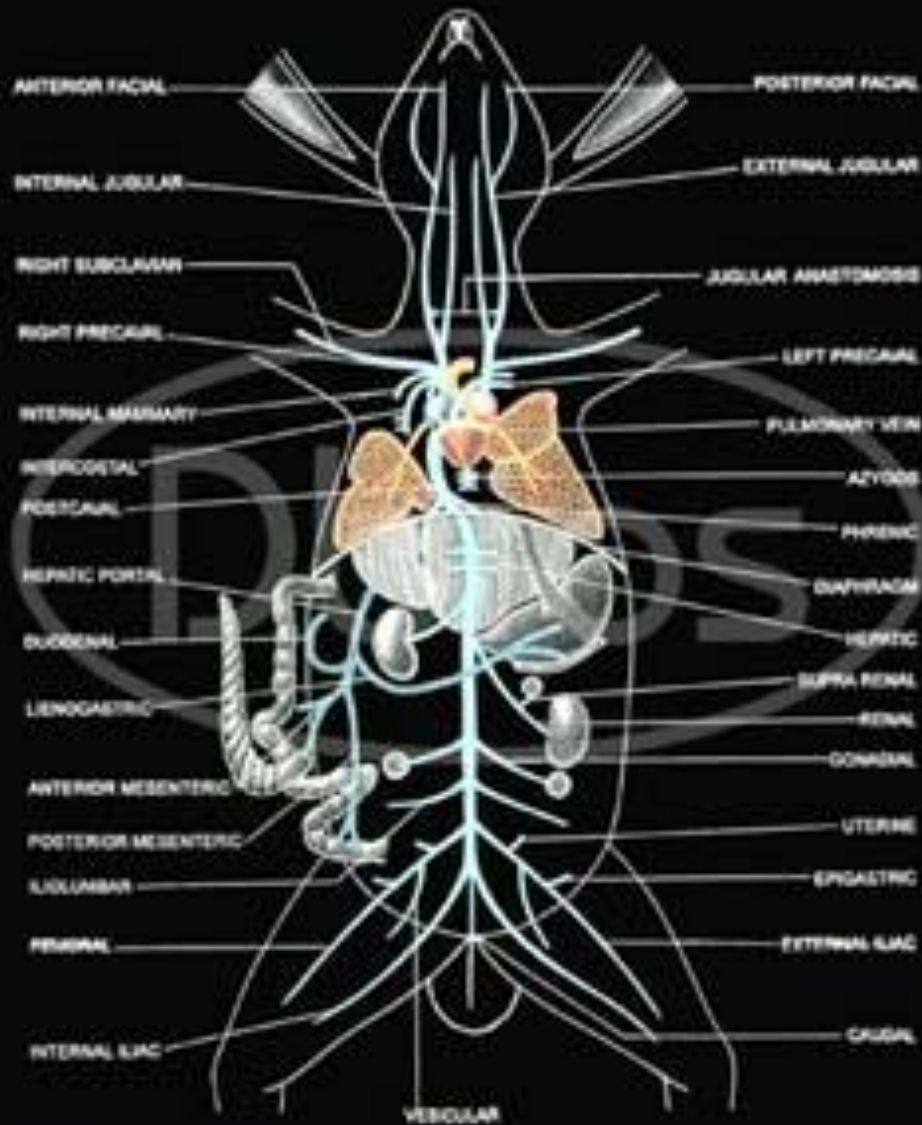


Pulmonary artery	Lungs	Foot artery	Fore limb distal ends
Subclavian artery	Neck/Forelimb	Mesenteric artery	Celiac, hepatic, splenic, etc.
Carotid artery	Head of the neck, branch for external carotid artery, branch of internal	Head vein	Superficial
Internal carotid	Anterior portion of head	Internal	Deep
External carotid	Posterior portion of head	External	Superficial
Mesenteric artery	Stomach, Pancreas, Duodenum	External iliac	Superficial
Celiac artery	Fore limb	Internal iliac	Deep
Hepatic artery	Fore limb		
Splenic artery	Fore limb		



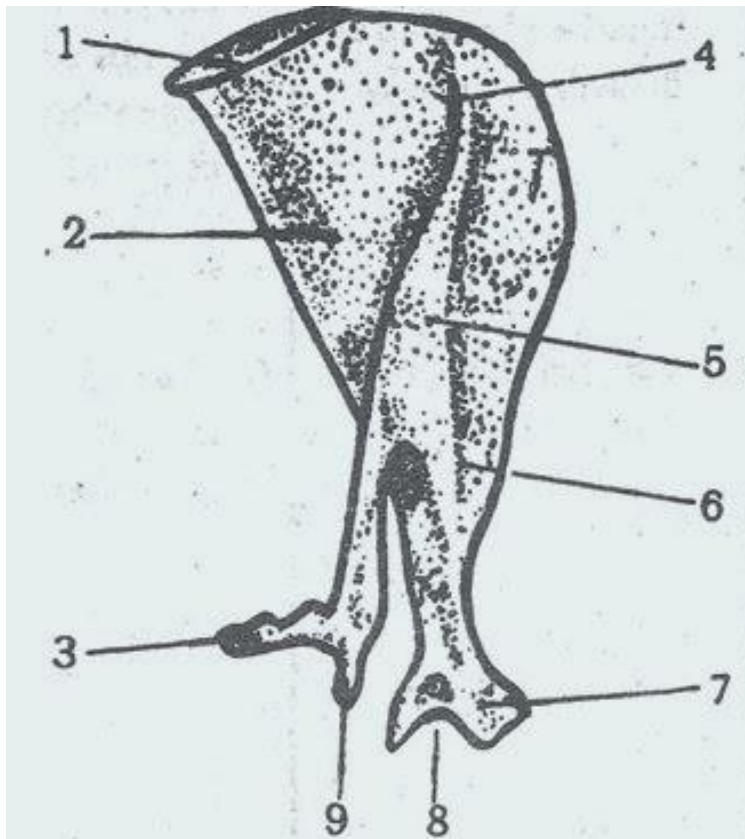


VENOUS SYSTEM OF RABBIT



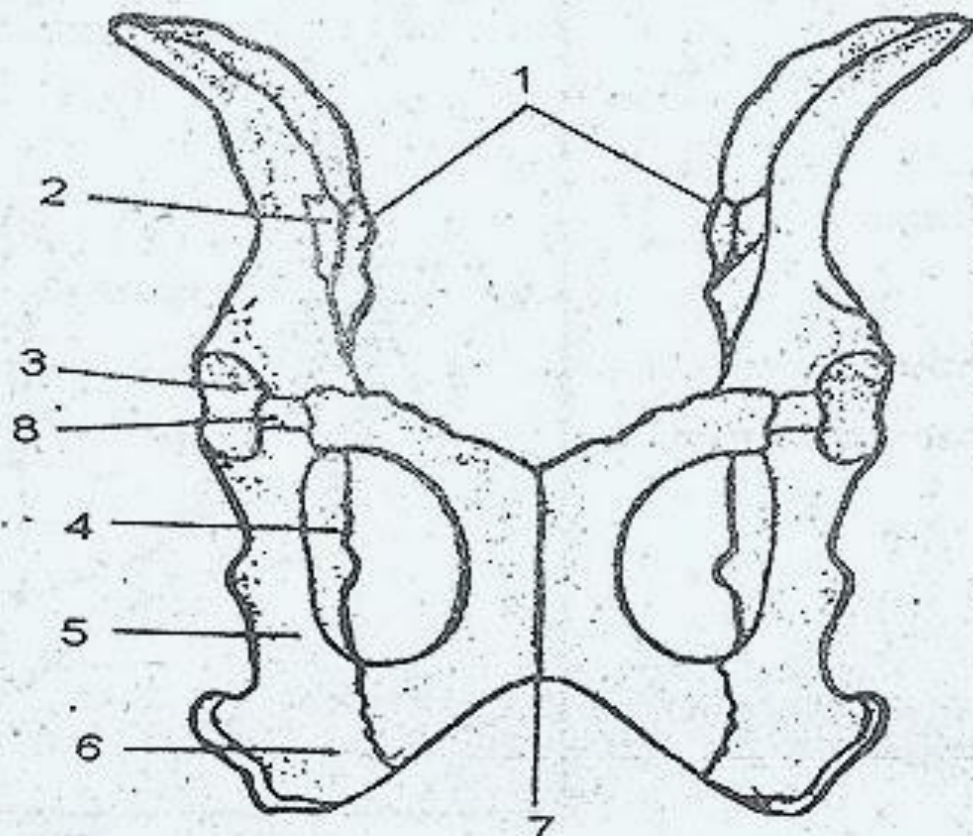






1. Supra scapula
2. glenoid border
3. metacromion process
4. scapula
5. spine
6. coracoid
7. coracoid process
8. Glenoid cavity
9. Acromion process

Rabbit - Pectoral girdle



- 1) articular surface
- 2) ilium
- 3) Acetabulum
- 4) Obturator foramen
- 5) ischium
- 6) ischial tuberosity
- 7) Pubic symphysis
- 8) Cotyloid cartilage

Rabbit - Pelvic girdle

