

User profile

Dashboard > Users > Sibi K.I. > View profile



Sibi K.I.

Send message

Add contact

Courses Details



ELEMENTS OF SOCIAL PSYCHOLOGY

Started on: Monday, 1 June 2020

SOCIAL PSYCHOLOGY IS A BEHAVIORAL SCIENCE BRANCH OF PSYCHOLOGY WITH A VERY FASCINATING SUBJECT MATTER-HUMAN BEHAVIOR IT IS A SCIENCE OF THE BEHAVIOR OF INDIVIDUAL IN SOCIETY -HOW THE INDIVIDUAL INFLUENCES OTHERS & IS INFLUENCED BY THEM THE COURSE WILL HELP THE LEARNERS: • TO FAMILIARIZE WITH THE SUBJECT OF SOCIAL PSYCHOLOGY • TO UNDERSTAND & ASSES ONE'S SELF/PERSONALITY-TYPES&DEVELOPMENT • TO GET AN INSIGHT IN TO THE UNDERLYING FACTORS & DYNAMICS OF HUMAN BEHAVIOR • TO ANALISE THE WORLD AROUND US-THE PATTERN OF MASS / CROWD BEHAVIOR

0%

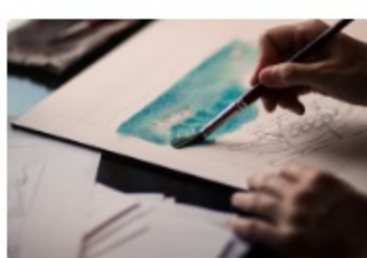


FOUNDATIONS OF SOCIOLOGICAL THOUGHT

Started on: Tuesday, 2 June 2020

DISCUSSION OF THE ORIGIN AND DEVELOPMENT OF SOCIOLOGICAL THOUGHT

0%



FUNDAMENTALS OF SOCIOLOGY- SEM 1 MODULE -3

Started on: Sunday, 27 September 2020

MODULE-3 focuses its discussion on Sociology as a Science which includes: 2.1 Sociology- Definition, Nature, Scope 2.2 Sociology as a Science - Scientific Method 2.3 Objectivity in Sociology 2.4 Major Branches-

0%

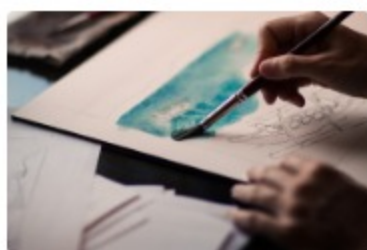


INDIAN SOCIAL STRUCTURE AND SOCIOLOGICAL PERSPECTIVES

Started on: Friday, 6 November 2020

The paper on Indian Society is devised in such a way to provide a preliminary understanding on such aspects of Indian Society as its Basic Features, Social Institutions, and the Processes of Social Change. It aims at to acquaint students with the various perspectives of the study of Indian society; to develop an understanding about the origin and development of Sociology in India; and to acquire knowledge regarding indigenization and contextualization of Sociology in India. Module 1 Basic Social Institutions Module 2 Religion and Caste Module 3 Early Sociological Perspectives in India Module 4 Marxian, Subaltern and Integrated Perspectives

0%



QUALITY IMPROVEMENT IN HIGHER EDUCATION

Started on: Monday, 30 March 2020

0%



SOCIAL PATHOLOGY

Started on: Friday, 6 November 2020

The programme Social pathology provides the learners with a systematic social understanding of pathological behavior from the individual and collective perspective. Module I Understanding Social Pathology Module II Social Pathology and Children Module III Crime Against women Module IV Substance Abuse and Terrorism

0%

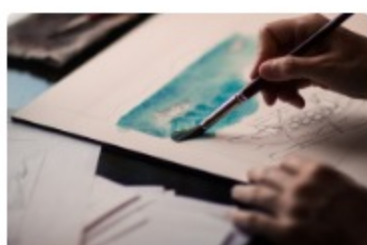


SOCIAL PSYCHOLOGY-OPEN COURSE

Started on: Friday, 10 July 2020

SOCIAL PSYCHOLOGY-OPEN COURSE FACULTY : PROF. SIBI K I COURSE OBJECTIVES • TO FAMILIARISE WITH THE SUBJECT OF SOCIAL PSYCHOLOGY • TO UNDESTAND & ASSES ONE'S SELF/PERSONALITY-TYPES&DEVELOPMENT • TO GET AN INSIGHT IN TO THE UNDERLYING FACTORS & DYNAMICS OF HUMAN BEHAVIOUR • TO ANALYSE THE WORLD AROUND US-THE PATTERN OF MASS / CROWD BEHAVIOUR COURSE OUTCOME • a) Development of a healthy personality • b) Ability to understand oneself and others • c) Excel in one's carrier and activities • d) Good insight for an effective life • e) Helps to transform & enrich oneself

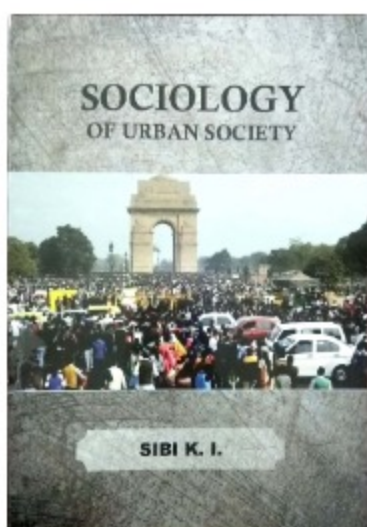
0%



Undergraduate programme in sociology

Started on: Thursday, 26 July 2018

0%



URBAN SOCIOLOGY

Started on: Wednesday, 6 June 2018

Familiarization of students with the discipline that scientifically studies urban life, and to make them knowledgeable about the realities and process and in urbanization are the purported aims of this Course. Module I Introducing Urban Sociology Module II Urbanization Process Module III Urban Social Disorganization Module IV Urban Planning and Development

0%

Stay in touch

Managed by Fr. Francis Sales Library Sacred Heart College (Autonomous), Thevara.

<http://www.shcollege.ac.in/>

+91 9446143971

moodle@shcollege.ac.in

Data retention summary

Get the mobile app

Purge all caches