

## User profile

Dashboard > Users > Giby Kuriakose > View profile

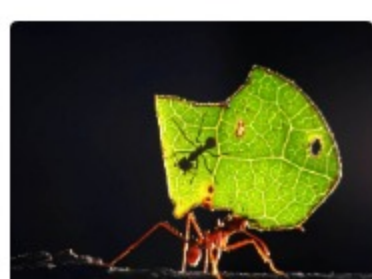


Giby Kuriakose

Send message

Add contact

Courses Details



### Ecology and Environmental Biology & Research Methodology

Started on: Tuesday, 13 October 2020

Ecology and environmental biology explain the relationships between living organisms and their environment. It also includes – population characteristics, community characteristics, Biogeography, environmental pollution including global warming, extinctions of plant and animal species, etc. The subject is very close to the life of every organisms including human. The course would help students to understand the concepts, theoretical aspects, applications of ecological concepts and theories, environmental management, etc. It also enriches the practical knowledge of student on ecology and environmental science.

0%



### AGRI BASED MICROENTERPRISES

Started on: Wednesday, 22 July 2020

Open Course for BSc Vth Semester Students.

0%

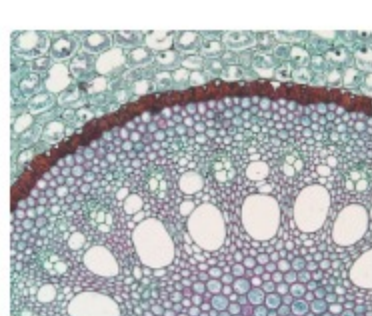


### ANATOMY AND ANGIOSPERM MORPHOLOGY

Started on: Sunday, 8 November 2020

The study of the external structure and form development of plants. It is one of the most important branches of botany. As plant morphology developed, the following independent sciences were established: plant anatomy, which studies the tissue and cell structure of organs; plant embryology, which studies embryo development; , plant taxonomy, which deals with the classification and systematics of plants and cytology, which studies cell structure and development. Flowers, leaves, stem, fruits are different external organs of a typical plant. Morphology deals with the study of the form, structure and types of these parts of a plant. This course is designed to know more about these parts than just how they look and the characteristics and functions of each of these parts. This course will help students to prepare better to prepare for learning plant taxonomy in the 5th semester

0%



### ANATOMY AND APPLIED BOTANY

Started on: Sunday, 8 November 2020

Plant Anatomy or phytotomy is the general term for the study of the internal structure of plants. Earlier it included plant morphology but at present, plant anatomy is considered as a distinct field, and refers to the internal plant structures. Plant anatomy is now frequently deals with the cellular level as well, and often involves the sectioning of tissues and microscopy.

0%



### ANGIOSPERM TAXONOMY AND ECONOMIC BOTANY - GK

Started on: Monday, 1 June 2020

This course provides basic understanding about tools and techniques how to identify common angiosperm plant families and species. This will help understand the diversity of plant world in a better way. It also provides basic understanding about morphology of flowering plants including, leaves, flower, types of flowers, fruits and types of fruits as well.

0%

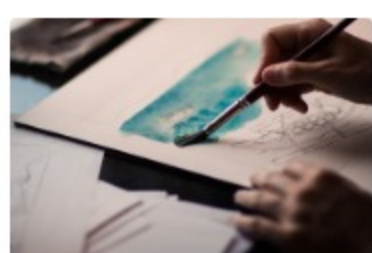


### BIOSTATISTICS, MICROTECHNIQUES & BIOPHYSICS

Started on: Monday, 9 November 2020

The term Biostatistics derived from biology and statistics, but now a days it is commonly refers to statistical methods needed in biology including medicine and public health. Biostatistics, to a broad sense, is the science of collecting and analyzing biological data to create knowledge about biological processes and functions. The scope of biostatistics includes applications in, ecology, medical research, public health, epidemiology, genetics, health services, demography, laboratory research, etc. An essential part of the practice of biostatistics is collaboration between the statistician and researchers and practitioners of different fields of biology. Biostatistics provide clarity about biological functions and process that are indefinite and non apparent.

0%



### Ecology and Environmental Biology & Research Methodology

Started on: Saturday, 28 July 2018

0%



### Internal Exam MSC III Semester

Started on: Tuesday, 4 August 2020

0%



### PHYTOCHEMISTRY AND PHARMACOGNOSY

Started on: Monday, 9 November 2020

Phytochemistry is the study of phytochemicals, that are chemicals available from plants. A phytochemist try to describe the structures of the large number of secondary metabolites, their respective functions and the biosynthesis of chemicals present in plants. Plants synthesize phytochemicals for different purposes, including protect themselves against herbivores, pests and plant diseases. Phytochemicals found in plants that are used as food are often have health benefits. The compounds found in plants are of different types but most of them are placed under four major groups; alkaloids, glycosides, polyphenols, and terpenes. This course elaborates the types of photochemicals, significance, methods to extract them from their natural sources, etc.

0%

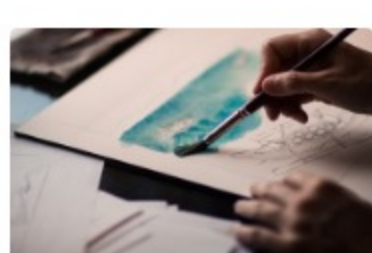


### PLANT REPRODUCTIVE BIOLOGY, PALYNOLOGY AND PLANT BREEDING - GK

Started on: Tuesday, 2 June 2020

In this course the part covered by me is the reproductive biology of plants. It includes; Basic concepts of developmental biology including the applications of plant reproductive biology. Pollination as a process of transfer of male gamate to the female reproductive part. Processes involved in the development of pollen after pollination Fertilization Different types of breeding systems and related aspects in different plants. Seed Biology.

0%



### QUALITY IMPROVEMENT IN HIGHER EDUCATION

Started on: Saturday, 30 June 2018

0%



### TAXONOMY OF ANGIOSPERMS

Started on: Monday, 9 July 2018

This course intend to cater detailed studies on taxonomy of flowering plants. It would provide students a platform for learning how to identify plants in a systematic way.

0%

## Stay in touch

Managed by Fr. Francis Sales Library Sacred Heart College (Autonomous), Thevara.

<http://www.shcollege.ac.in/>

+91 9446143971

[moodle@shcollege.ac.in](mailto:moodle@shcollege.ac.in)

Data retention summary

Get the mobile app

Purge all caches