

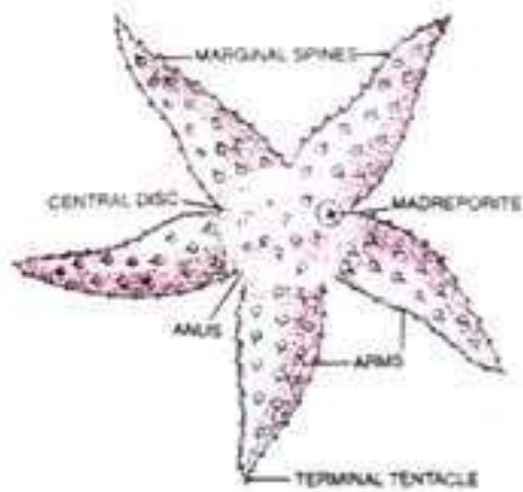


**PHYLUM ECHINODERMATA**

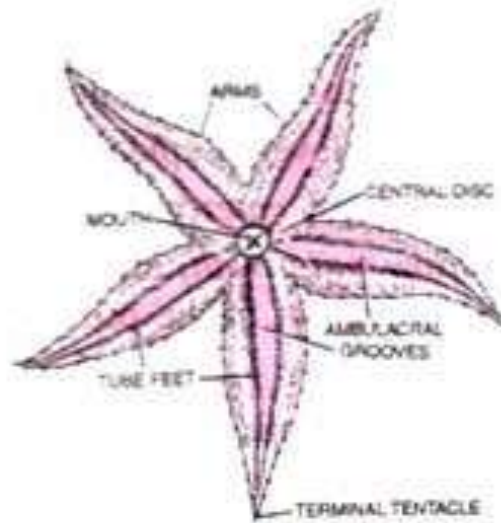




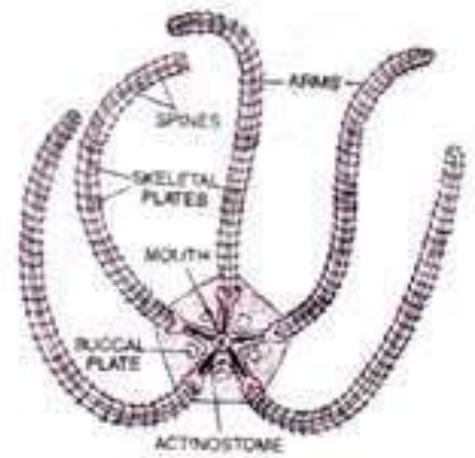




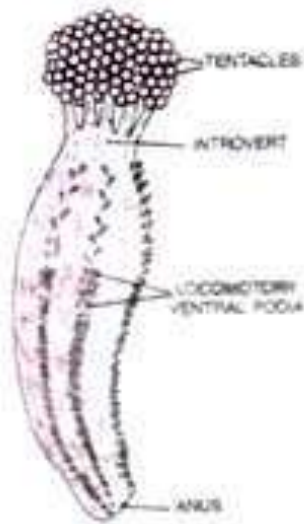
*Aboral surface of star fish*



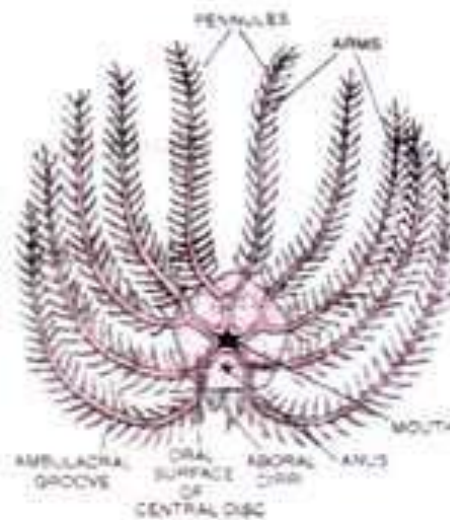
*Oral surface of star fish*



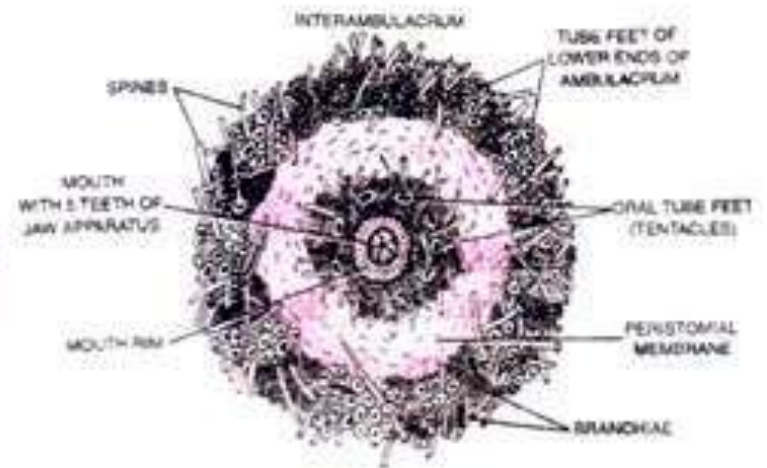
*Brittle star*



*Holothuria*



*Feather star*



*Sea urchin*

Fig. 4.39. Some Echinoderms.

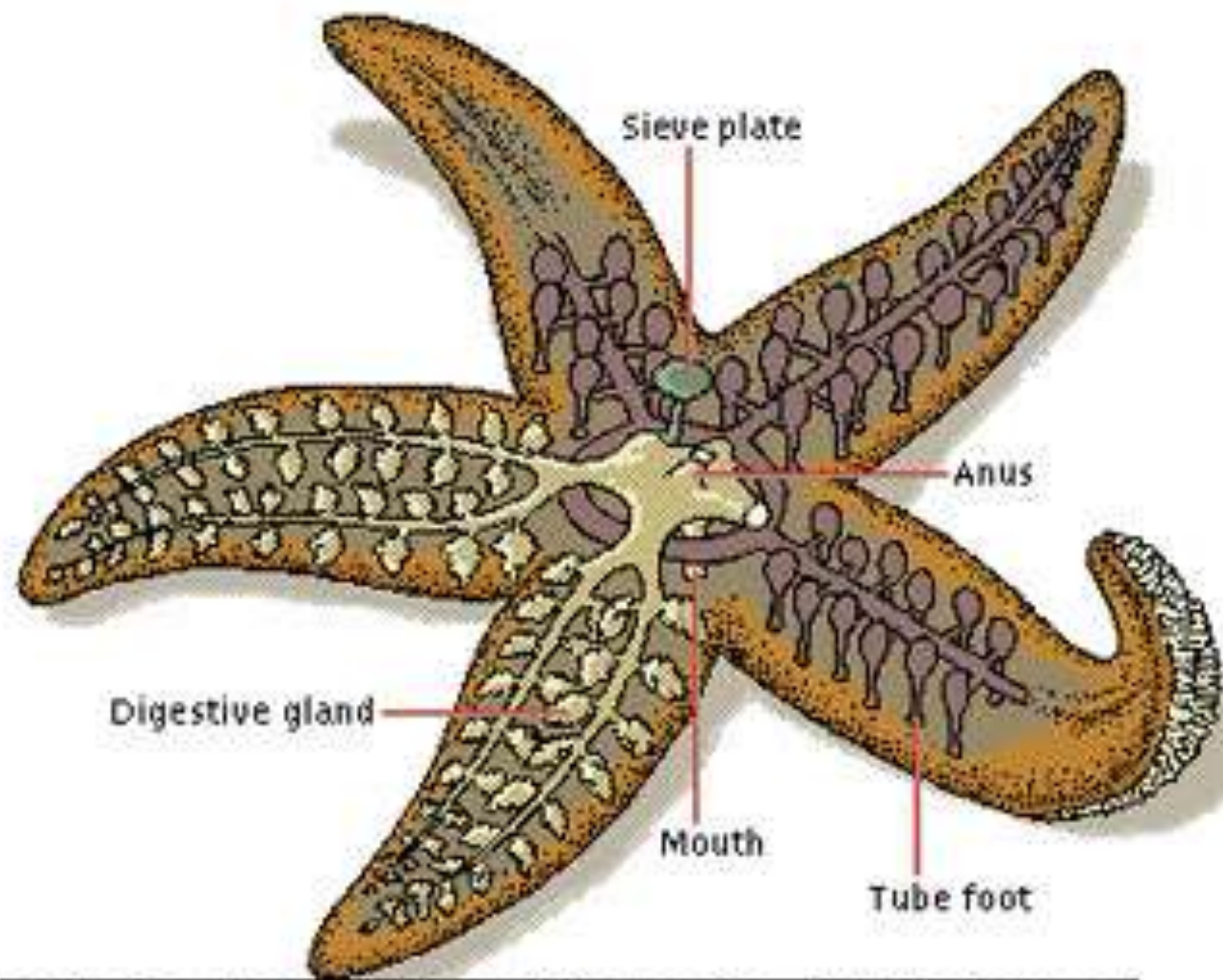
# Classification

**Subphylum Eleutherozoa** (Free living Adults)

1. Asterozoidea
2. Ophiurozoidea
3. Echinozoidea
4. Holothurozoidea

**Subphylum Pelmatozoa** (Sessile Echinoderms)

One Extant Class-Crinozoidea

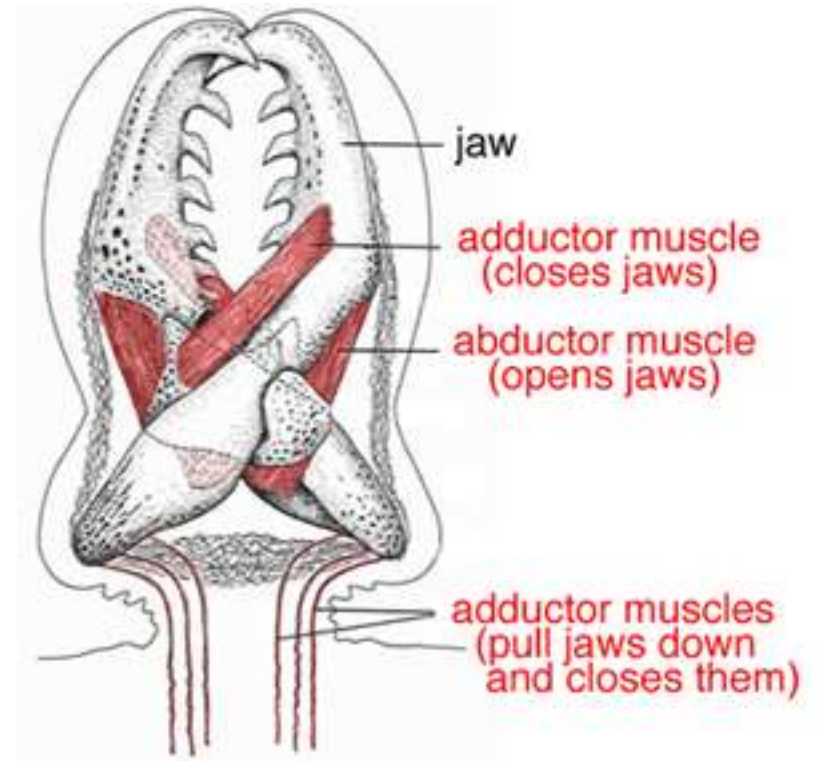








# Pedicellariae



# Class: Asteroidea



*Astropecten*



# Class: Ophiuroidea





# *Ophiothrix*







# Ophiopluteus larva





# Class: Echinoidea





# *Echinus*

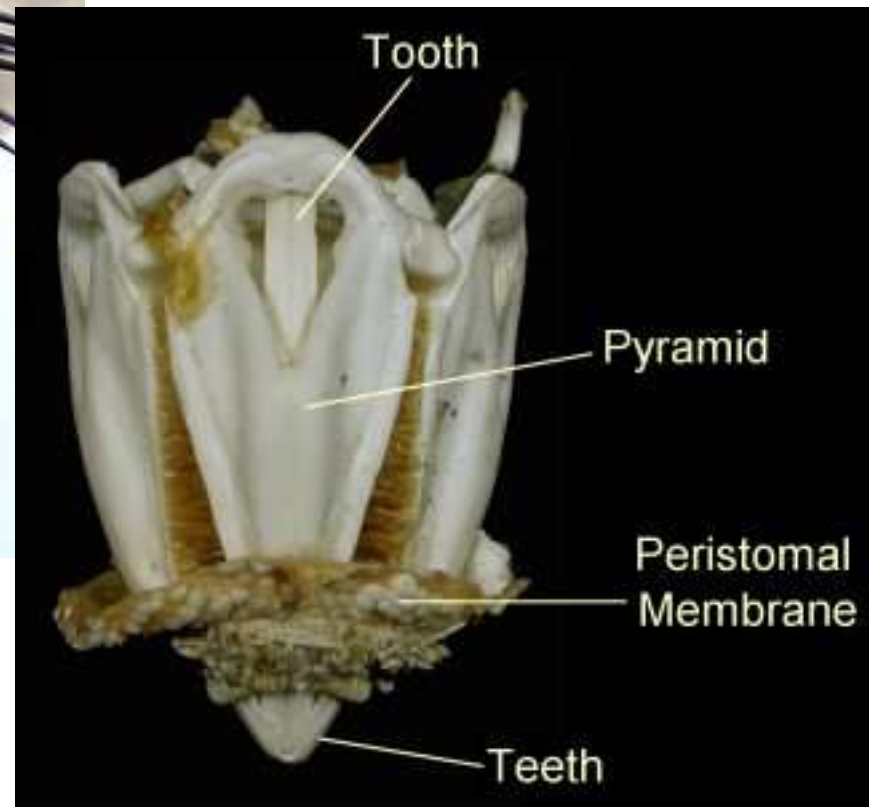








# Aristotle's Lantern





# Echinopluteus Larva

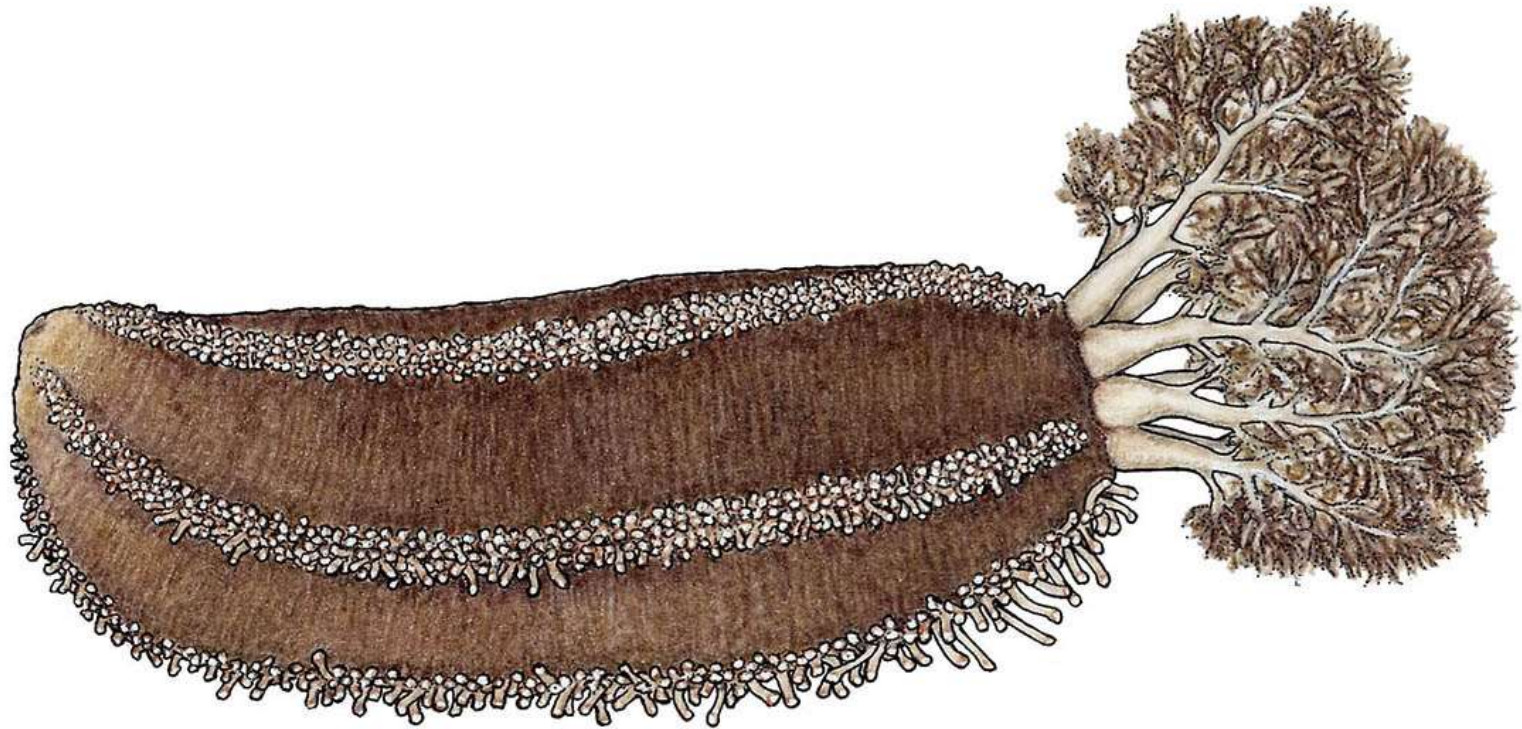
**ARKive**  
www.arkive.org



© D P Wilson / [www.flpa-images.co.uk](http://www.flpa-images.co.uk)



# Class: Holothuroidea





# Sea cucumber





# Sea cucumber as food





# Beche de mer





# Sea Cucumber







# Fierasfer fish



# Class Crinoidea





# Sea Lilly

