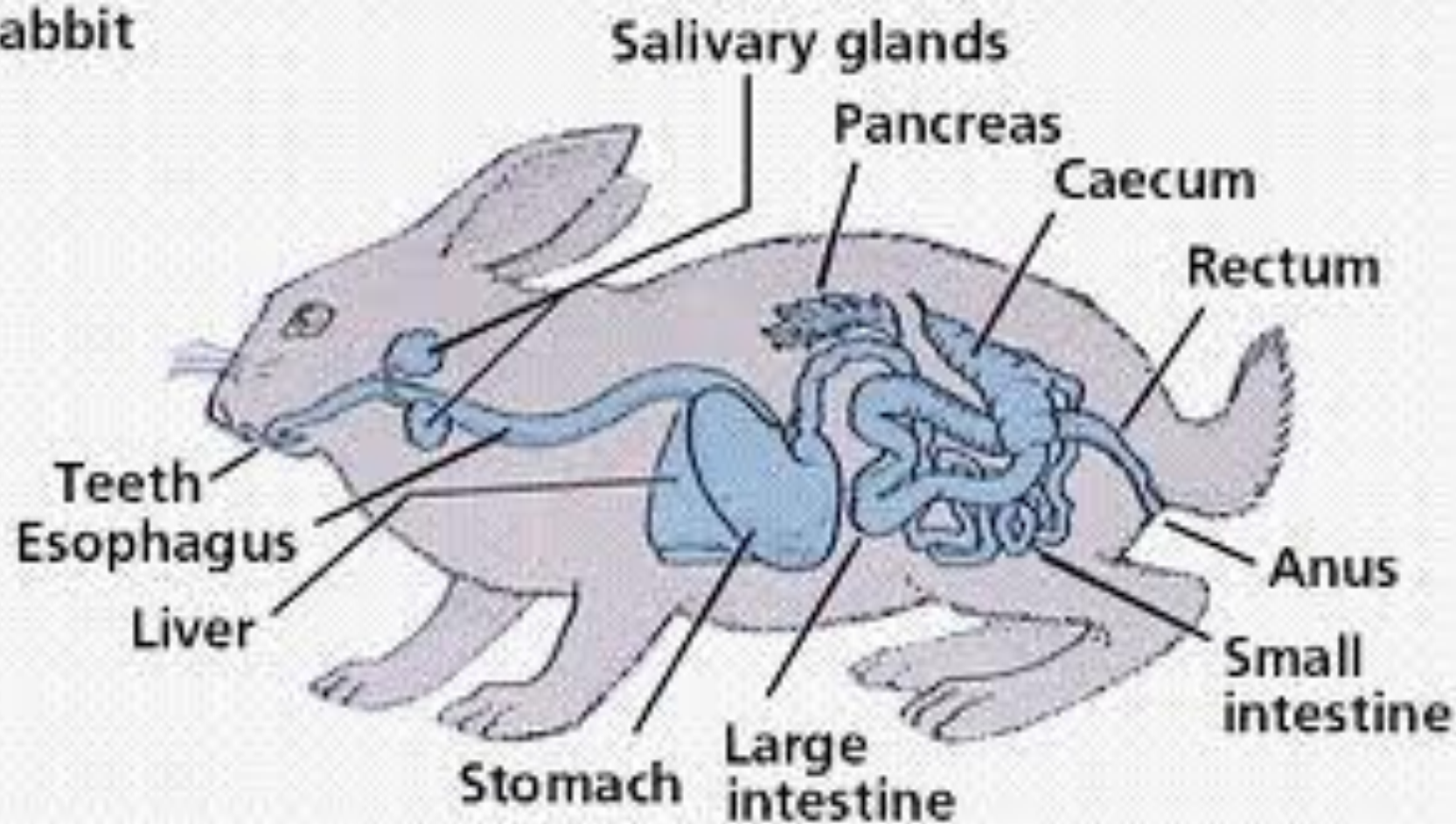
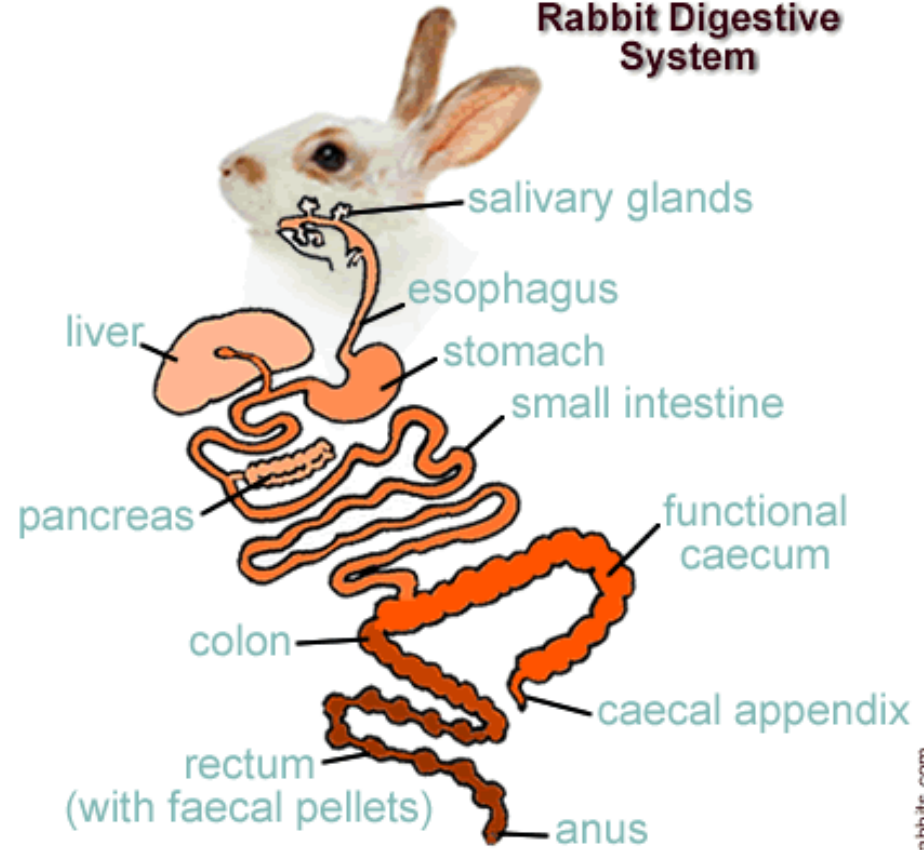


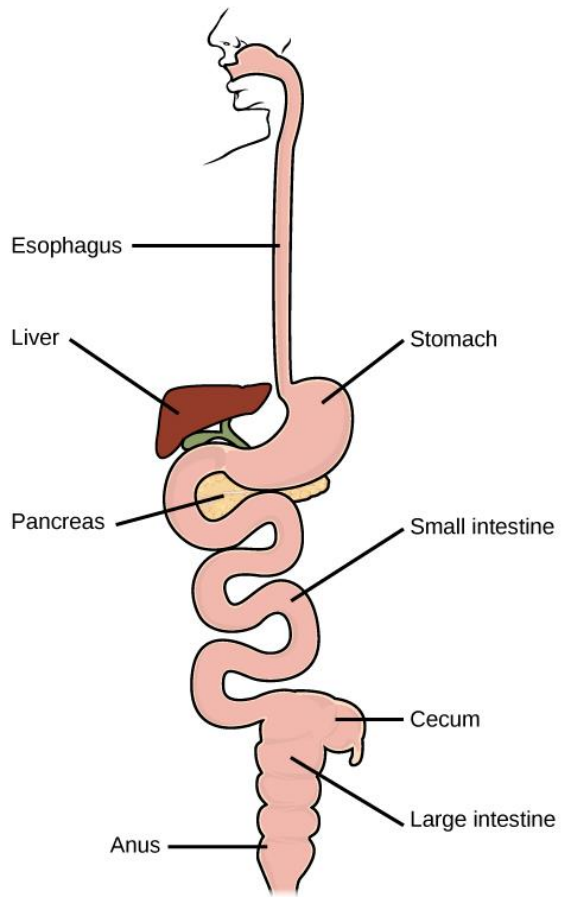
# Mammal Type study- Rabbit

## Rabbit

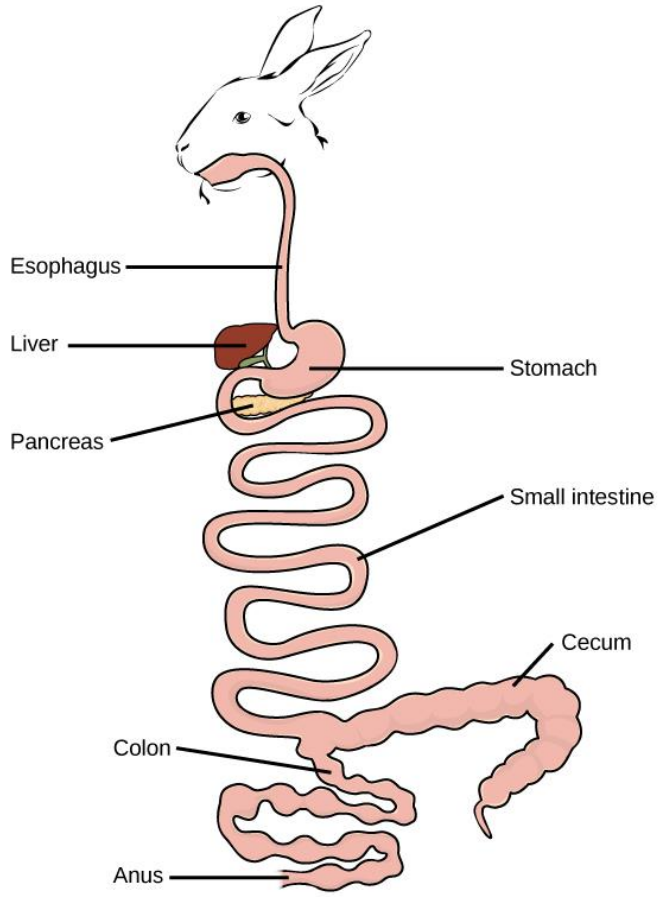


## Rabbit Digestive System



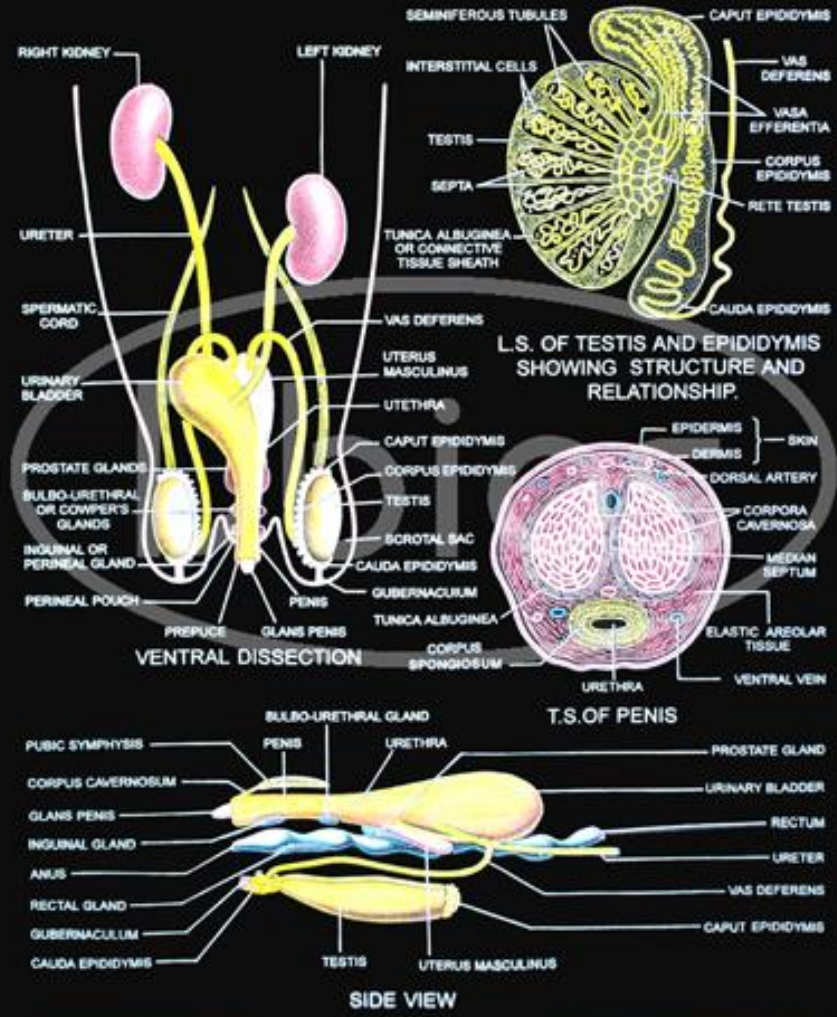


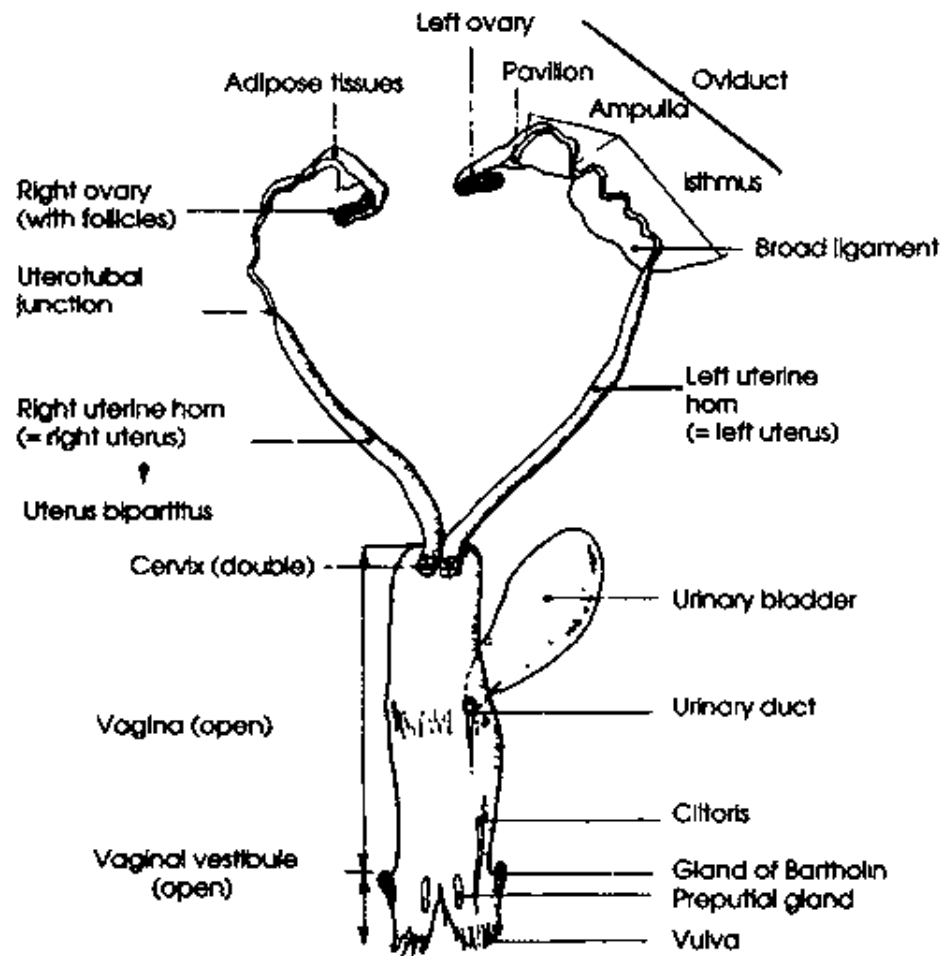
(a) Human digestive system



(b) Rabbit digestive system

# RABBIT REPRODUCTIVE SYSTEM MALE





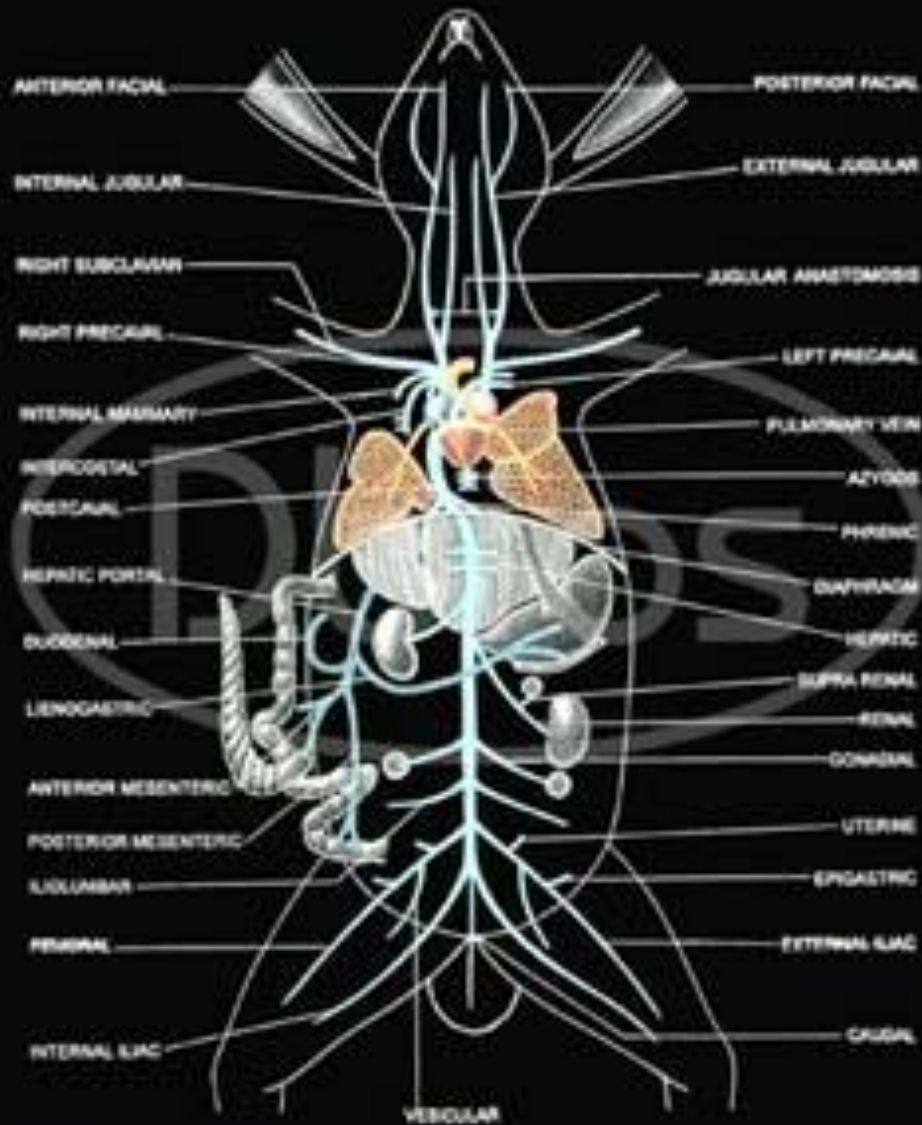
## RABBIT-ARTERIAL SYSTEM



Pulmonary artery	Lungs	Renal artery	Left kidney
Common carotid	Head/Neck	Mesenteric artery	Colon, small intestine, etc.
Common iliac	Base of the neck, trunk, the pelvic girdle, and limbs of all	Head vein	Head
Intercostal vein	Intercostal space	Heart vein	Heart
Mesenteric vein	Stomach, Pancreas, Spleen	Brain vein	Brain
Mesenteric artery	Small intestine	Brain vein	Brain
Mesenteric vein	Small intestine	Brain vein	Brain



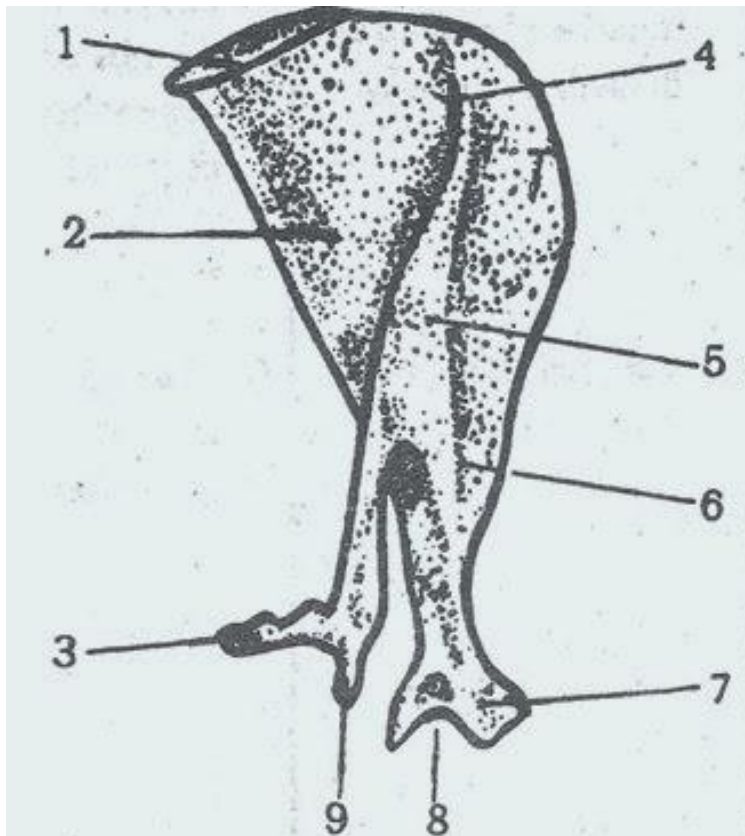
# VENOUS SYSTEM OF RABBIT





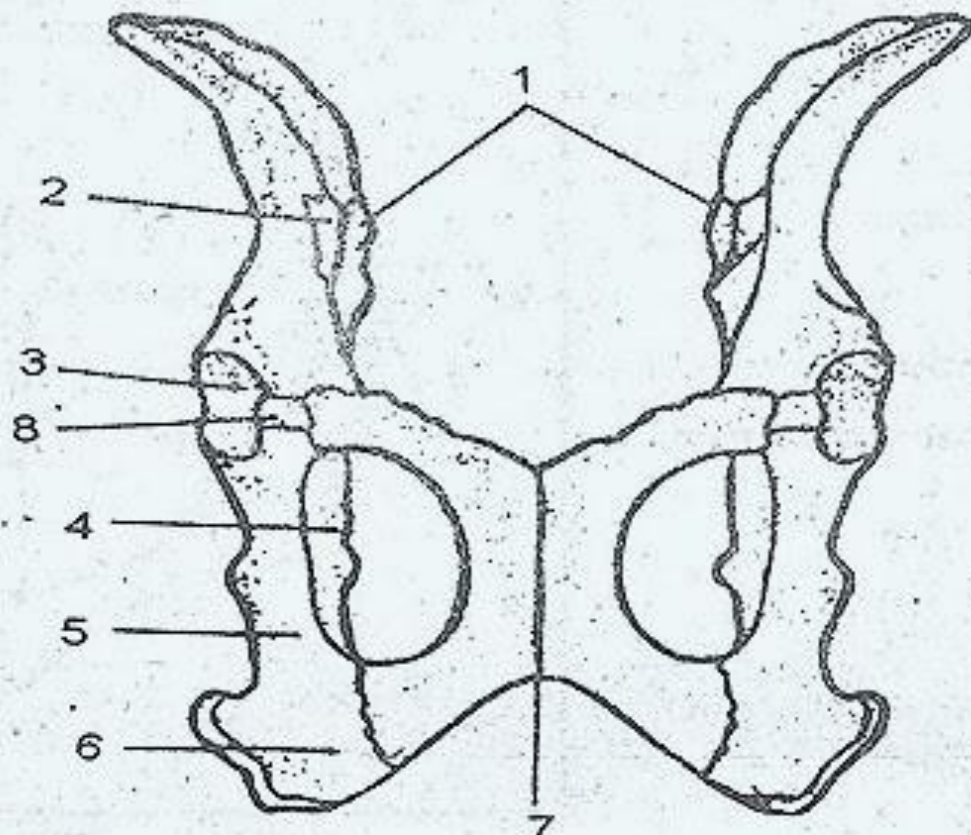






1. Supra scapula
2. glenoid border
3. metacromion process
4. scapula
5. spine
6. coracoid
7. coracoid process
8. Glenoid cavity
9. Acromion process

Rabbit - Pectoral girdle



- 1) articular surface
- 2) ilium
- 3) Acetabulum
- 4) Obturator foramen
- 5) ischium
- 6) ischial tuberosity
- 7) Pubic symphysis
- 8) Cotyloid cartilage

Rabbit - Pelvic girdle

